

FLOOR PRO

Additive Package for Polymer Floor Polishes

Facilitates easy 3-Step formulation of water-based Floor Polishes

FLOOR PRO - is a revolutionary chemical system designed to provide an exceptionally simple and reliable means to produce Polymer Floor Polishes of up to 25% genuine activity - **in 3 Easy STEPS!** All you need to do is to select a Polymer Emulsion of your choice, add this to your water portion, followed by Floor PRO and thereafter add in your E-Wax HWE30; top this off with some EcwaCide IT as the preservative, and you're ready to go!

FLOOR PRO has been specifically designed with the South African market in mind. It is intended for use with any of the commonly available Zinc cross-linked Acrylic or Styrene/Acrylic Polymer Emulsions. Like most of our local formulations, it can also make good use of a single wax emulsion for greater economy. **FLOOR PRO** is the result of extensive research done towards establishing the reasons behind many of the problems associated with the making of Polymer Floor Polishes in the conventional way. No longer will you have to worry about shocking the emulsion through incorrect addition rates or order, or incorrect choice of plasticizer or coalescent. No more post-production thickening, separation or poor performance.

No more unhappy customers!

FLOOR PRO offers you:

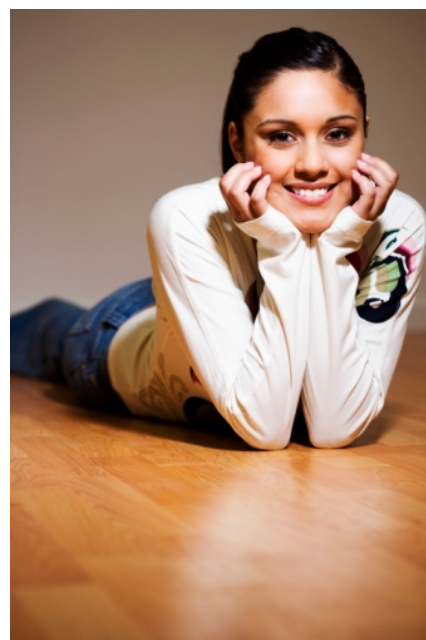
- Cost Effective - No more expensive than doing it the hard way!.
- Reliable and consistent results every time.
- All in One Coalescent, Plasticiser, Adhesion & Leveling system.
- No more costly, slow-moving stock holding.
- Safe & simple to use.

Does not contain Formaldehyde.

Chemical Identification & Physical properties

Active content:	100%
Non-volatile content:	48-52%
Appearance:	Amber, transparent fluid
pH (as manufactured):	8.5 - 9.5
S.G. (at 20°C):	0.99 - 1.0 g/cm ³
Solubility:	Partially soluble in water.
Shelf Life as supplied:	At least 1 year at ambient conditions.

This data does not constitute a specification - please see current "Certificate of Analysis". For further data please also request a copy of the MSDS (Material Safety Data Sheet)



Directions for Use

There are two simple methods to produce Floor Polishes using **FLOOR PRO**.

The first is to produce a 25% active Polish and then dilute this down to any other desired level of activity. This might require a little more care in the initial processing but can save a lot of time in the long run. In this method it is best to charge the mix vessel with 70% of the required water add a preservative then, with gentle but thorough stirring throughout the process, proceed to add the Polymer Emulsion to the water. After a couple of minutes of stirring you will begin to slowly and steadily add the **FLOOR PRO**, and allow this to mix in for 30 minutes! In a separate vessel, add the E-Wax HWE30 to the remaining 30% of water; and then also introduce this mix slowly and steadily to the main batch; allow to mix for a further 20 minutes.

The second option (for lower activity levels) is to follow any of our other simple formulations overleaf. All the required water is added to the mix vessel, followed by the Polymer Emulsion. As above the **FLOOR PRO** is added gently, followed by 30 minutes of stirring. Thereafter one can gently add the E-Wax HWE30 and stir for a further 20 minutes. In all instances mixing is best achieved with a conventional prop stirrer - do not allow air to become entrained!

Packaging

FLOOR PRO is available in:
 25 Kg HDPE blowpack
 200 Kg HDPE blowpack
 1000 Kg IBC (Flowbin)

Disclaimer / Non-warranty

This product has been subjected to limited stability tests and has been shown to perform well. However formulators should establish their own long term stability and functionality tests. The information contained herein is to our best knowledge true and accurate, but since the conditions of use are beyond our control, Ecwamix Chemical Systems cc. disclaims any liability in connection with the use of this product and/or information. Warranty extends only as far as to the replacement of material shipped if not compliant with the specification as set out in the attached "Certificate of Analysis" and within the expiry period of the said product. All recommendations or suggestions are made without guarantee. It is good practice to conduct one's own safety/stability tests on all final Formulations prior to marketing.

Guideline Formulations

Option 2: To make up a Polymer Floor Polish at any given activity level.

Note: Mixing of the batch must be continuous from after the water has been charged to the main mix vessel, throughout the process, until complete! The best form of mixing is achieved by an ordinary propellor or paddle mixer that can provide a thorough but gentle stirring of the entire batch.

Polymer Floor Polish 22%

	Order	% USE
Water	1	41.4%
EcwaCide IT (Preservative)	2	0.1%
Polymer Emulsion 38%	3	38.5%
Part B		
FLOOR PRO	4	7.5%
Part C		
E-Wax HWE30	5	12.5%
Total		100.0%

Polymer Floor Polish 20%

	Order	% USE
Water	1	47.1%
EcwaCide IT (Preservative)	2	0.1%
Polymer Emulsion 38%	3	36.0%
Part B		
FLOOR PRO	4	6.8%
Part C		
E-Wax HWE30	5	10.0%
Total		100.0%

Polymer Floor Polish 18%

	Order	% USE
Water	1	52.3%
EcwaCide IT (Preservative)	2	0.1%
Polymer Emulsion 38%	3	32.5%
Part B		
FLOOR PRO	4	6.1%
Part C		
E-Wax HWE30	5	9.0%
Total		100.0%

Polymer Floor Polish 16%

	Order	% USE
Water	1	57.4%
EcwaCide IT (Preservative)	2	0.1%
Polymer Emulsion 38%	3	29.0%
Part B		
FLOOR PRO	4	5.5%
Part C		
E-Wax HWE30	5	8.0%
Total		100.0%

Polymer Floor Polish 15%

	Order	% USE
Water	1	60.3%
EcwaCide IT (Preservative)	2	0.1%
Polymer Emulsion 38%	3	27.0%
Part B		
FLOOR PRO	4	5.1%
Part C		
E-Wax HWE30	5	7.5%
Total		100.0%

Polymer Floor Polish 12.5%

	Order	% USE
Water	1	66.6%
EcwaCide IT (Preservative)	2	0.1%
Polymer Emulsion 38%	3	22.0%
Part B		
FLOOR PRO	4	4.3%
Part C		
E-Wax HWE30	5	7.0%
Total		100.0%

Polymer Emulsion 38%: ATECRYL FC (Protea Speciality Chemicals)
 Revacryl 6075 or 6081 (Revertex/CIM)
 Primal B924 (Rohm & Haas/Servochem)
 Suncryl 624 (Sancryl/Crest)

Blending Instructions

Step 1 - (Part A) Charge mixing vessel with water (1), add preservative (2), add the Polymer Emulsion (3) and stir for 3 minutes.

Step 2 - (Part B) **Slowly** and **gently** add the **FLOOR PRO** (4) and allow to mix for 30 minutes.

Step 3 - (Part C) Add the **E-Wax HWE30** **slowly** and **gently** to the main batch.

Continue stirring for a further 20 minutes.